



# SCANDIC COPENHAGEN

## General

- Free WiFi throughout the hotel
- Bar and restaurant
- Shop open 24 hours
- Modern gym and sauna
- Parking under the hotel (fee payable)
- Nordic Ecolabelled

## Rooms

- 486 rooms
- 10 disability rooms
- Online check-out

## Meetings and conferences

- 16 meeting rooms
- Up to 1100 participants
- Modern AV equipment
- Breakout areas

## Location

- 500 m to Tivoli
- 500 m to Copenhagen Central Station
- 12 km to Copenhagen Airport

Scandic Copenhagen is located in the heart of Copenhagen with views of the lakes and the city skyline. Copenhagen's many attractions and great shopping are right on the doorstep. Inside, the hotel is elegant, atmospheric and ultramodern. The interior is unique with its designer wallpaper and furniture, mirrored ceiling in the restaurant and swings in the lobby.

Whether you are here for business, a meeting or a short break, you are sure to feel at home at Scandic Copenhagen. All our rooms offer a modern interior with a wide range of features for your comfort and space to sit and work. Staying with us, you always have access to free WiFi, and most of the floors offer the best views in Copenhagen.

You can also enjoy a delicious lunch or dinner in our restaurant 'The Grill' or a drink in our inviting lobby bar.

And, in the morning, Scandic's huge breakfast buffet will of course await you after a good night's sleep.

Parking is available under the hotel for a fee.



Vestersøgade 6 | DK-1601 København V  
Phone +45 33 14 35 35 | Email [copenhagen@scandichotels.com](mailto:copenhagen@scandichotels.com)  
[scandichotels.com/copenhagen](http://scandichotels.com/copenhagen)

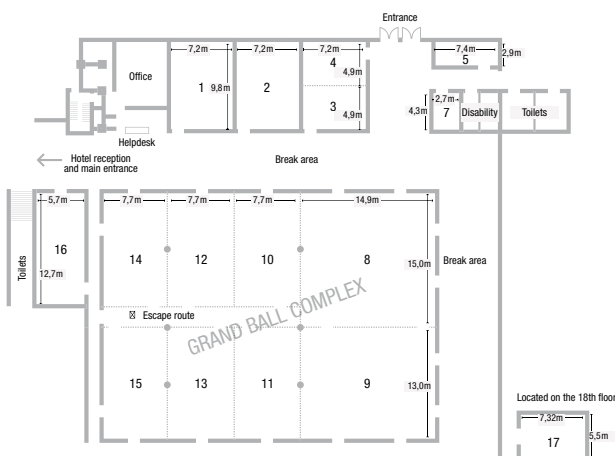
**Scandic**  
COPENHAGEN



As one of the largest hotels in the capital, Scandic Copenhagen is able to host meetings and conferences for up to 1100 participants. We offer 16 flexible meeting rooms with everything you need in terms of professional and ultramodern AV

equipment, plus free WiFi. Despite the large scale, we make no compromises on comfort or the quality of the environment, and in our breakout areas we can offer exciting catering options.

No/name	Daylight	m <sup>2</sup>	Boardroom	U-shape	Classroom	Cabaret	Theatre	Islands
1 / Christian	Yes	70						
2 / Frederik	Yes	70	28	26	40	32	60	30
3 / Margrethe 1	No	35	10		10		20	
4 / Margrethe 2	Yes	35	14		12	8	30	
Margrethe 1+2	Yes	70	28	26	40	32	60	30
5 / Hamlet	Yes	22	12					
7 / Kassellet	No	11	6					
8 / Grand Ball	No	223	36	52	140	96	210	120
9 / Amalienborg	No	193	36	50	126	72	180	96
10 - 15*	No	100	32	34	70	48	88	36
16 / Børsen	No	72	30	34	48	24	70	36
Grand ball complex	No	1064			782	480	1109	



\*Applicable to all six rooms.